

# MONTHLY MEMBERSHIP PROGRESS REPORT

LOCATION MISSOURI

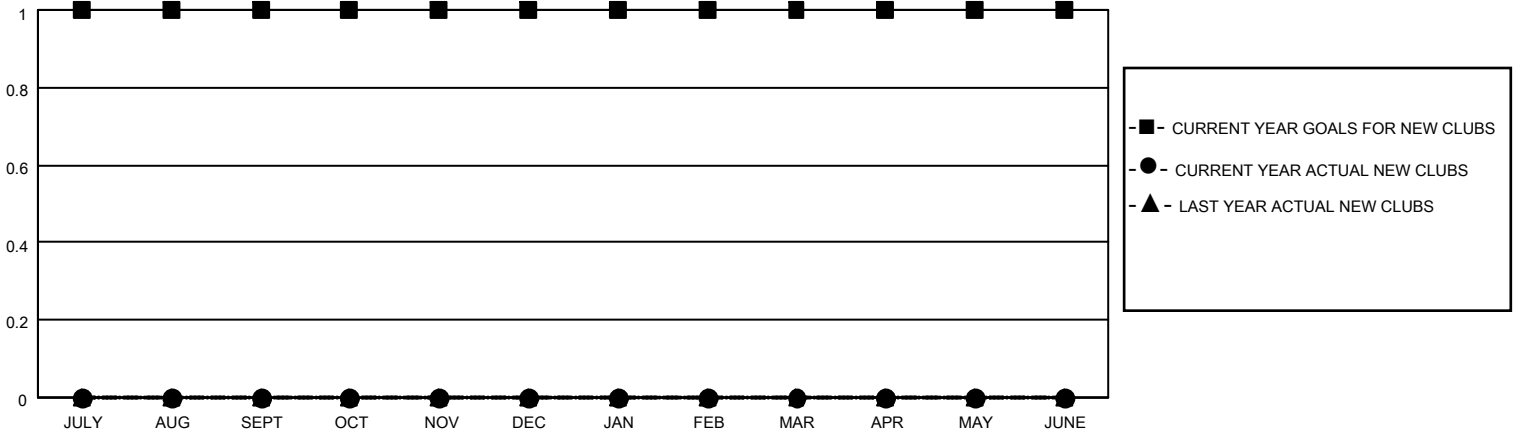
District 26 M3

Results as of: 6/30/2021

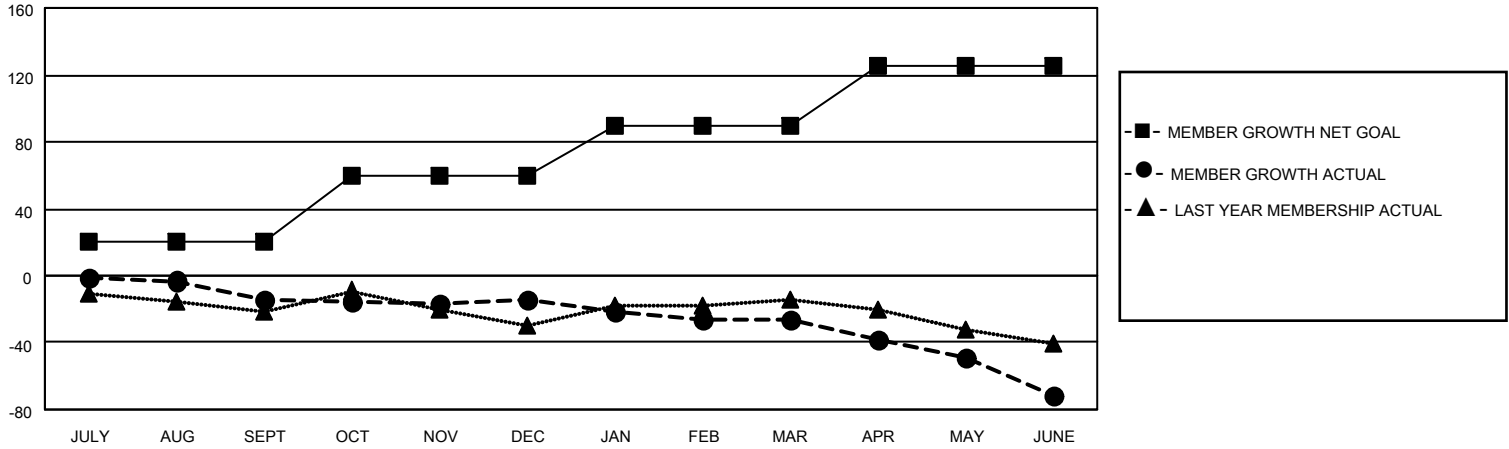
Clubs			
RESULTS FOR 2020-2021			
QUARTER	NEW CLUB GOAL	NEW CLUBS	DROPPED CLUBS
JULY/AUG/SEPT	1	0	0
OCT/NOV/DEC	0	0	0
JAN/FEB/MAR	0	0	1
APR/MAY/JUNE	0	0	0

Members			
RESULTS FOR 2020-2021			
QUARTER	MEMBER GROWTH NET GOAL	MEMBER GROWTH ACTUAL	DROPPED MEMBERS ACTUAL (including transfers)
JULY/AUG/SEPT	20	19	33
OCT/NOV/DEC	40	18	15
JAN/FEB/MAR	30	14	25
APR/MAY/JUNE	35	15	59

**GOALS AND ACTUAL NEW CLUBS CUMULATIVE**



**GOALS AND ACTUAL MEMBERS CUMULATIVE**



**DROPPED CLUBS: 1**

**23 CLUBS OF 55 ADDED 1 OR MORE NEW MEMBERS**

**GENDER DISTRIBUTION**

MALE            864 (75.13%)  
 FEMALE        286 (24.87%)

**DROPPED MEMBERS**

[CLICK HERE FOR CUMULATIVE MEMBERSHIP DATA](#)

DECEASED	27
CLUB CANCELLED	7
OTHER	98
<b>TOTAL</b>	<b>132</b>

TOTAL FAMILY UNIT MEMBERS	122
FAMILY MEMBERS PAYING HALF DUES	63